

SECTION THREE  
ST LUCIE ESTATES SUBDIVISION  
OF  
PART OF GOVT LOTS 2 AND 3 IN SEC. 3, TWP 38.5 RA. E.  
PALM BEACH COUNTY, FLORIDA.

SCALE 60' = 1"

23

STATE OF FLORIDA }  
County of Palm Beach }  
This instrument was filed for record at  
4 P.M. this 12 day of February  
1925 and duly recorded on the 12 day of  
February 1925 in Book 11  
of Plate in Page 23. Record Verified  
J. B. Anno Clerk Circuit Court  
By \_\_\_\_\_ D.C.

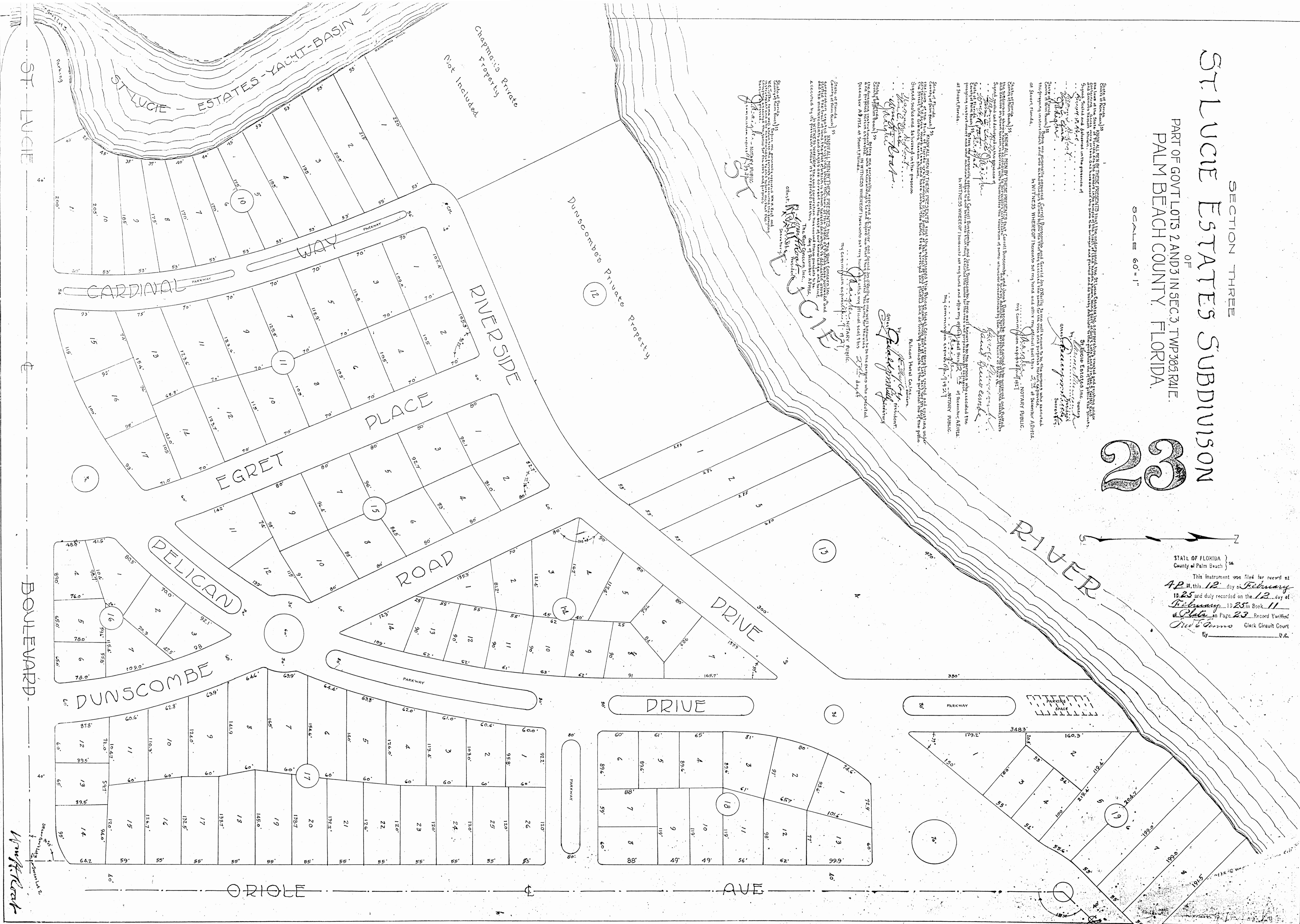
State of Florida, ss:  
I, \_\_\_\_\_, County Clerk of said County, do hereby certify that the foregoing instrument was duly recorded in the public records of said County, Florida, at St. Lucie, Florida, on the 12 day of February, A.D. 1925, in Book 11 of Plate in Page 23.

State of Florida, ss:  
I, \_\_\_\_\_, Notary Public, do hereby certify that the foregoing instrument was duly recorded in the public records of said County, Florida, at St. Lucie, Florida, on the 12 day of February, A.D. 1925, in Book 11 of Plate in Page 23.

State of Florida, ss:  
I, \_\_\_\_\_, Notary Public, do hereby certify that the foregoing instrument was duly recorded in the public records of said County, Florida, at St. Lucie, Florida, on the 12 day of February, A.D. 1925, in Book 11 of Plate in Page 23.

State of Florida, ss:  
I, \_\_\_\_\_, Notary Public, do hereby certify that the foregoing instrument was duly recorded in the public records of said County, Florida, at St. Lucie, Florida, on the 12 day of February, A.D. 1925, in Book 11 of Plate in Page 23.

State of Florida, ss:  
I, \_\_\_\_\_, Notary Public, do hereby certify that the foregoing instrument was duly recorded in the public records of said County, Florida, at St. Lucie, Florida, on the 12 day of February, A.D. 1925, in Book 11 of Plate in Page 23.



Wright Road